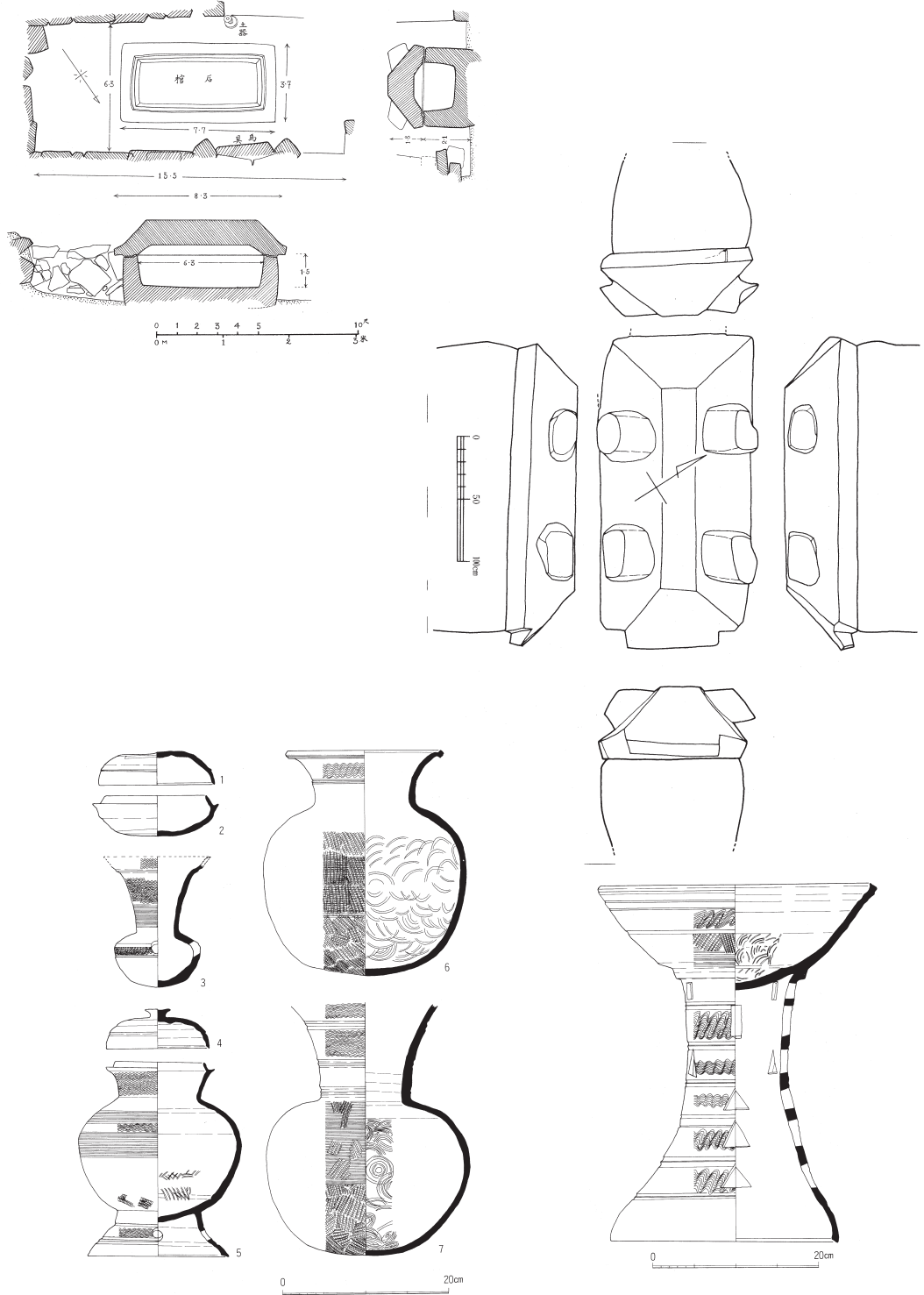


高島市

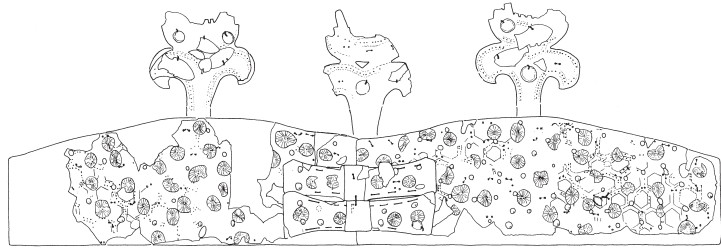
4177 鴨稻荷山古墳



鴨稻荷山古墳



(内行花文鏡)



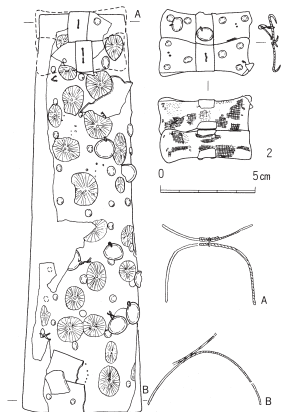
展開図



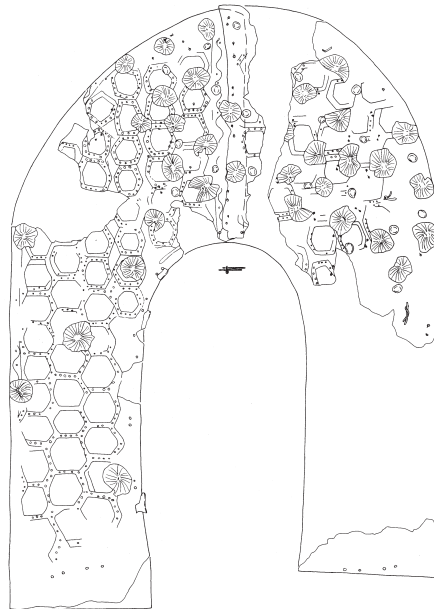
蝶形金具の裏面と断面

帯結合部

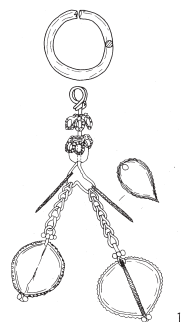
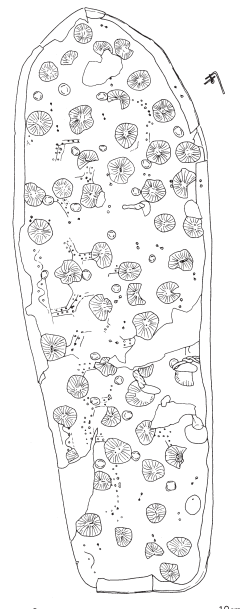
(広帯二山式冠)



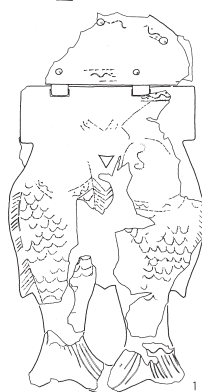
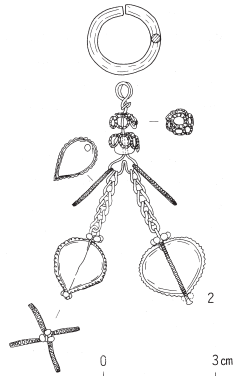
(半筒形金銅製品)



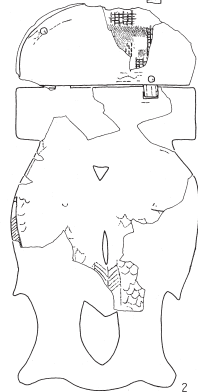
(金銅製沓)



(金製垂飾付耳飾)



(魚佩)

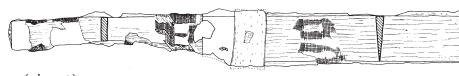
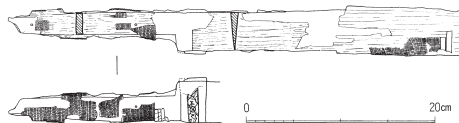


0 10cm

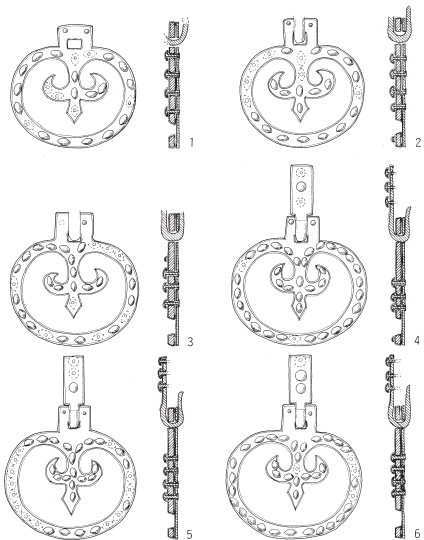
# 鴨稻荷山古墳



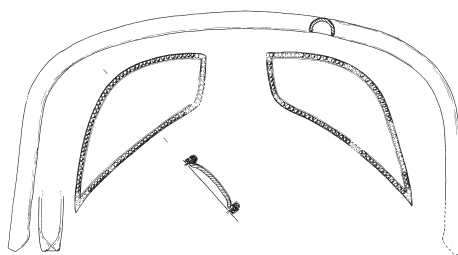
(双鳳環頭大刀把頭)



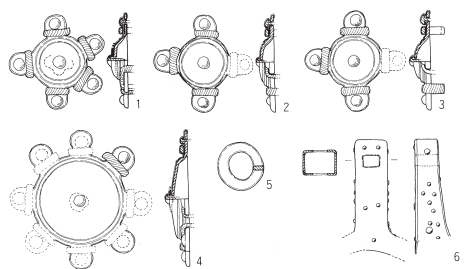
(大刀)



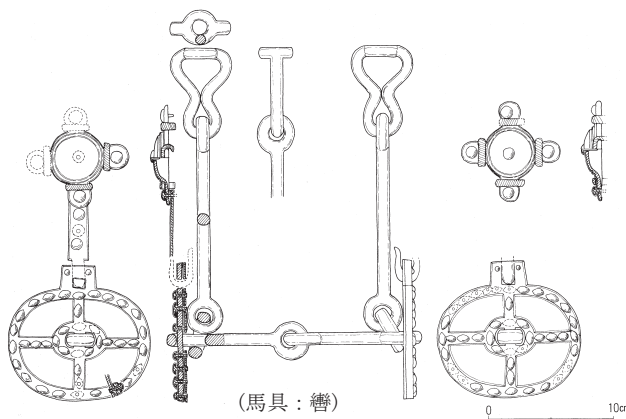
(馬具：杏葉)



(馬具：鞍)

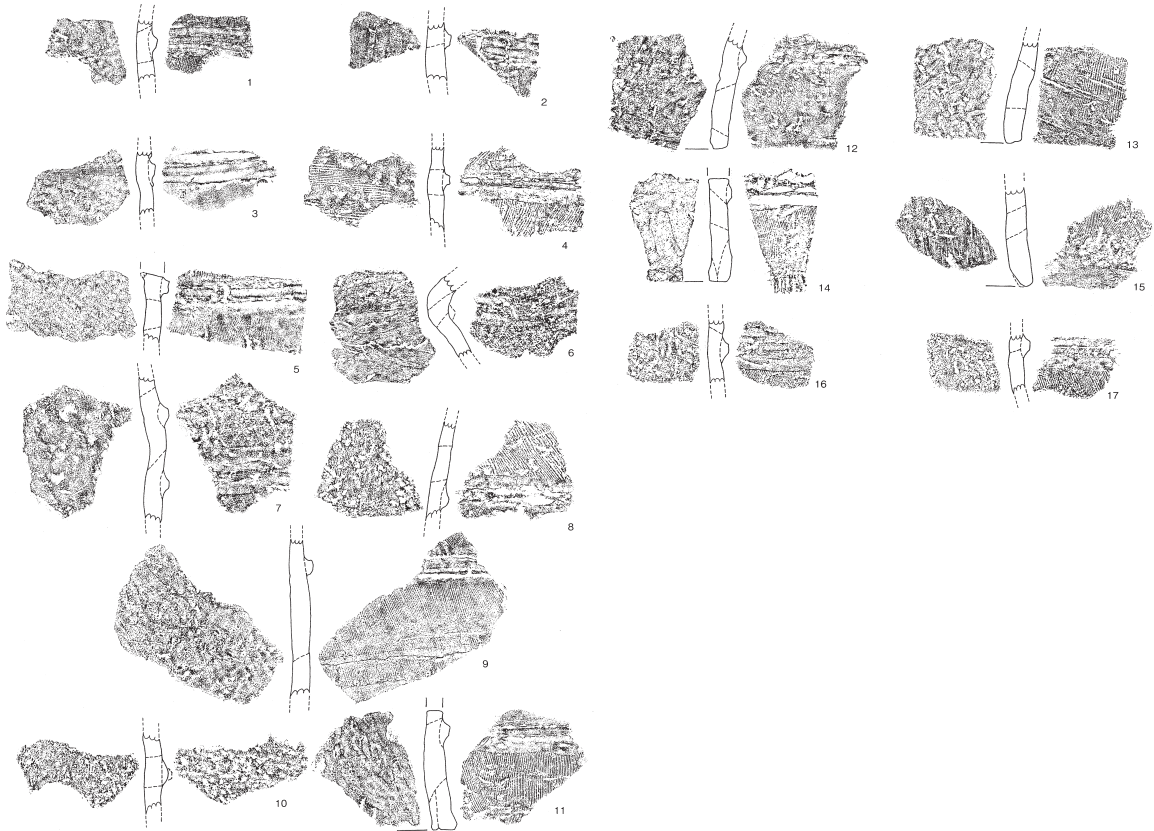
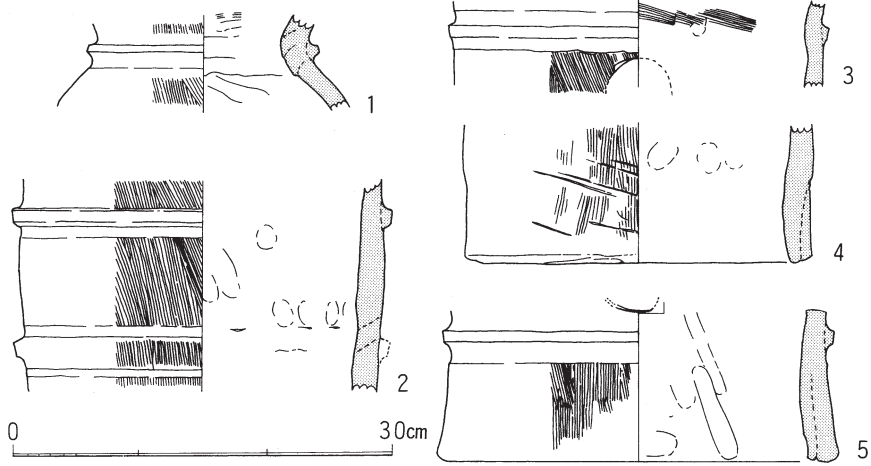


(馬具：雲珠・辻金具等)



(馬具：轡)

鴨稻荷山古墳



0 20cm