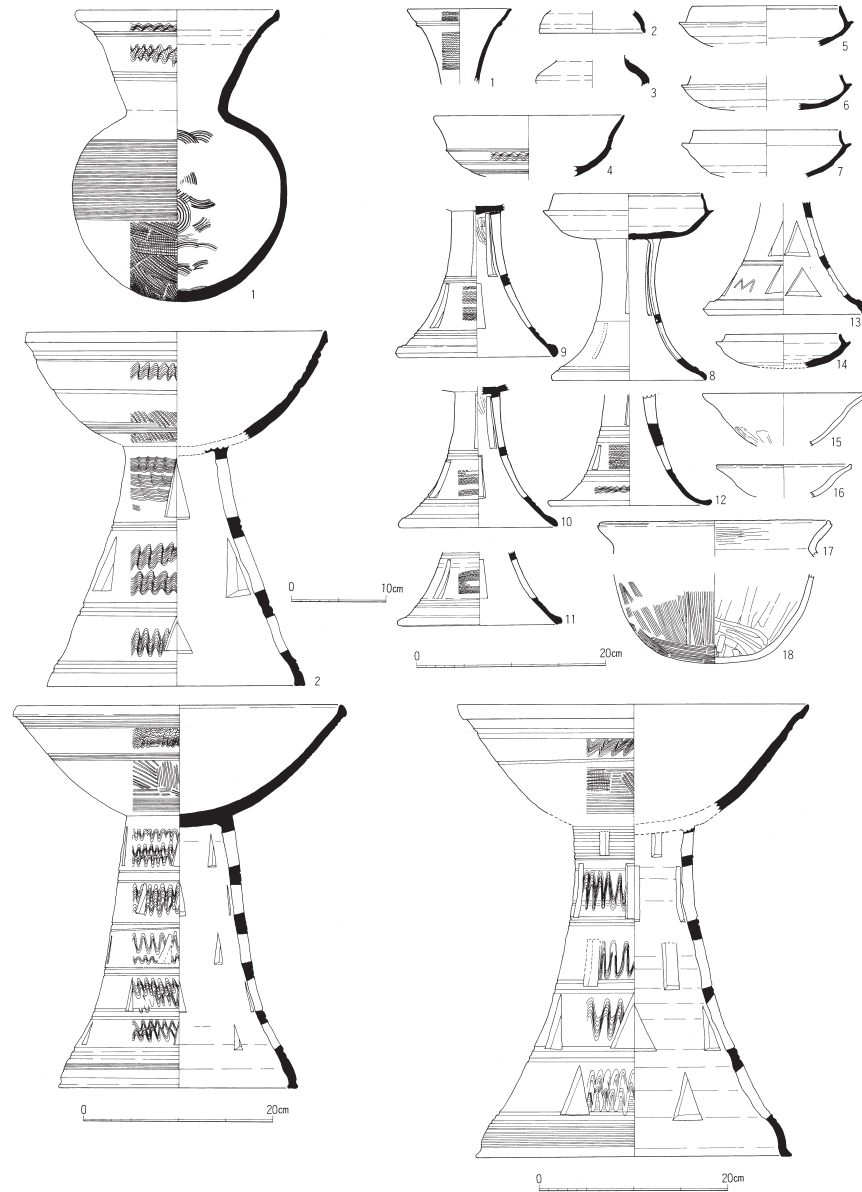
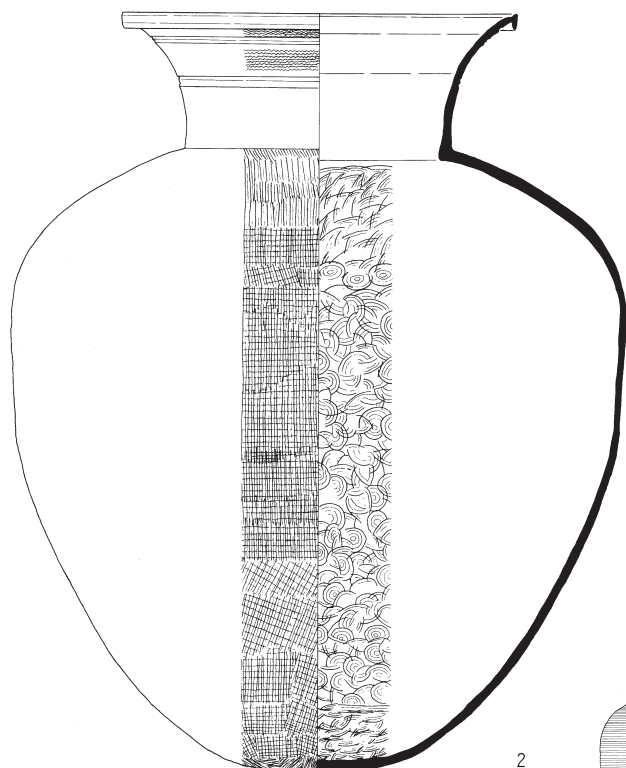
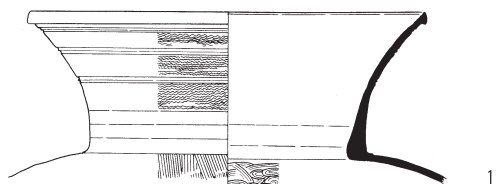


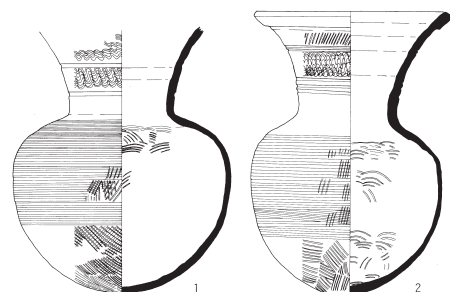
米原市  
4221 山津照神社古墳



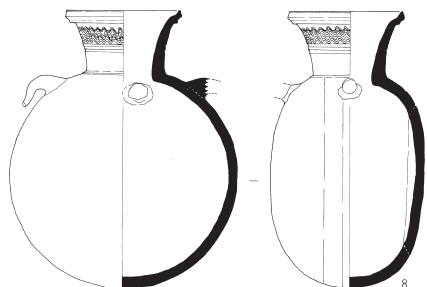
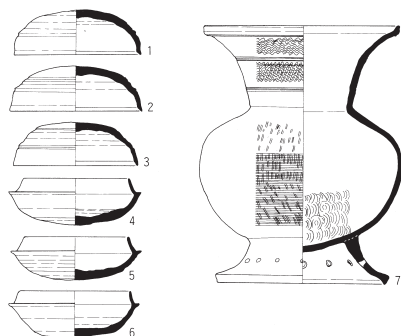
4220 山津照神社古墳



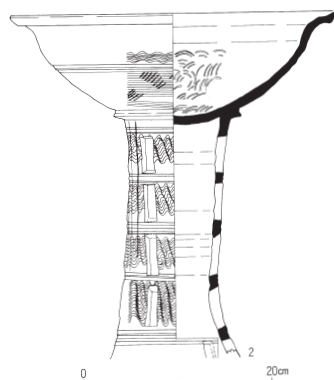
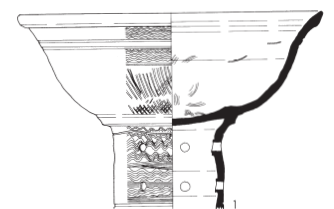
0 40cm



0 20cm

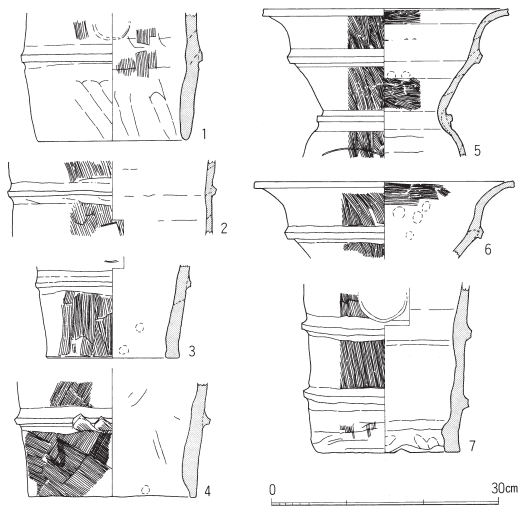
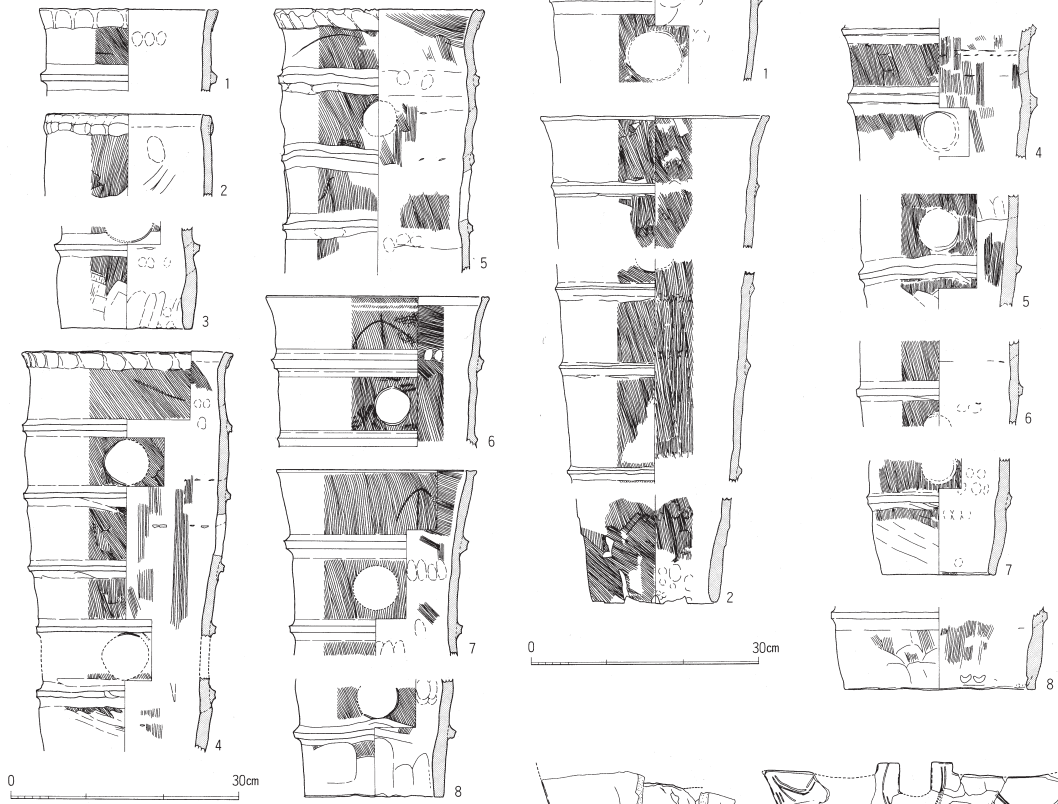


0 20cm

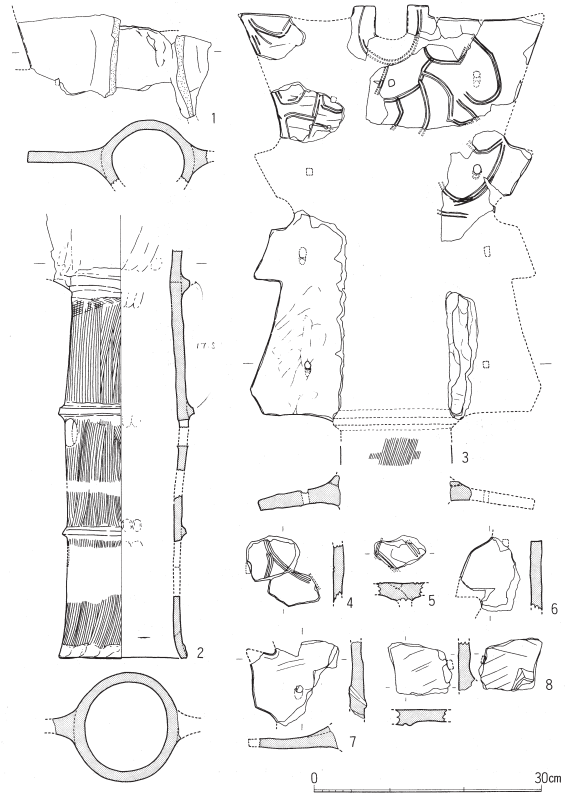


0 20cm

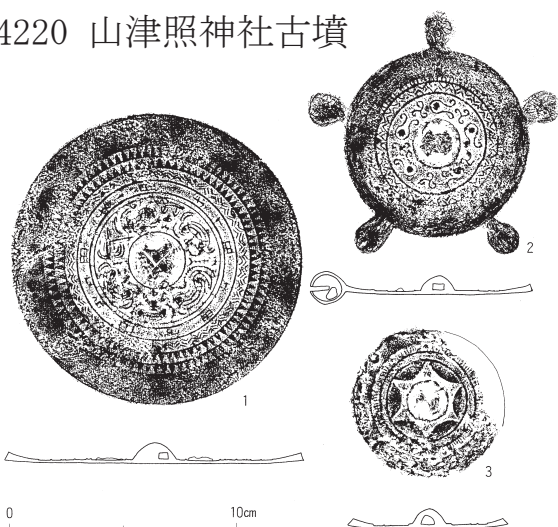
4220 山津照神社古墳



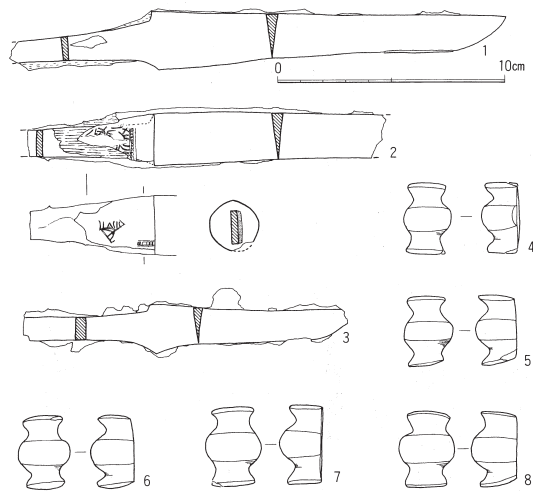
(埴輪)



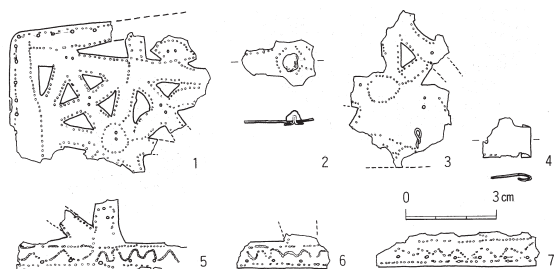
4220 山津照神社古墳



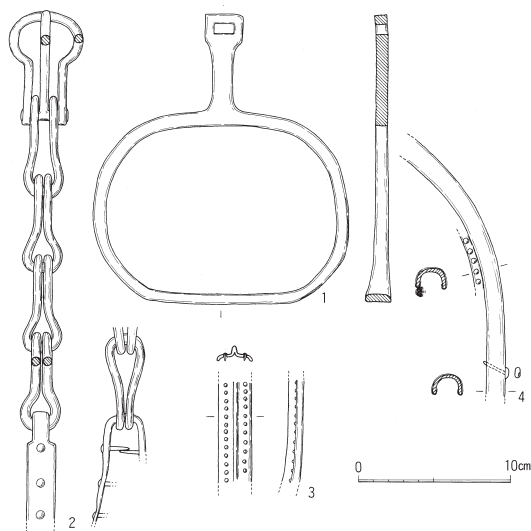
(鏡)



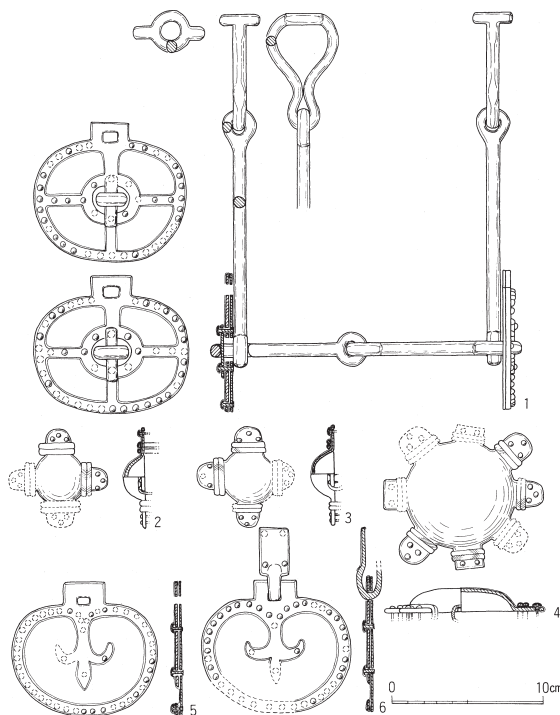
(刀子・三輪玉)



(冠)



(馬具：鑑・鞍)



(馬具：轡・辻金具・雲珠・杏葉)